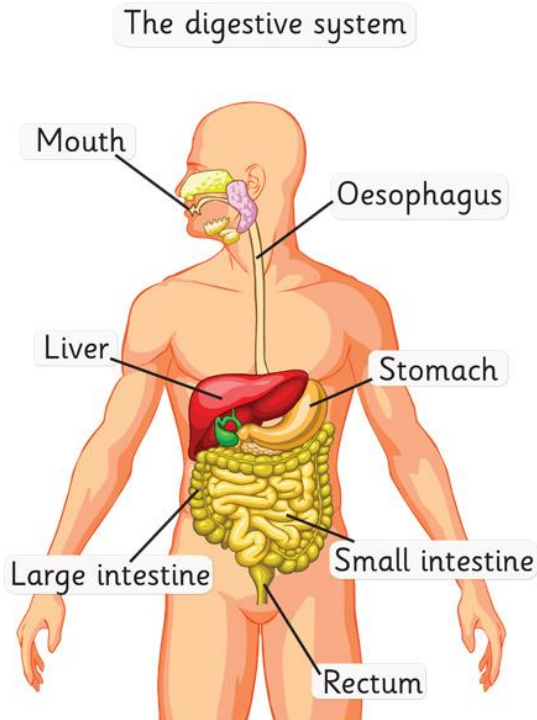




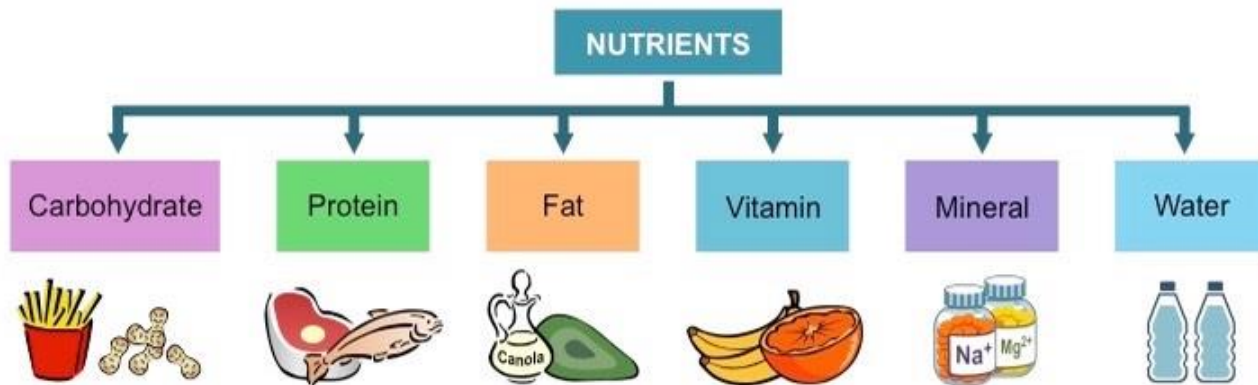
Vocabulary	
digest	Break down food so it can be used by the body.
Oesophagus	A muscular tube which moves food from the mouth to the stomach.
Stomach	An organ in the digestive system where food is broken down with stomach acid and by being churned around.
Small intestine	Part of the intestine where nutrients are absorbed into the body.
Large intestine	Part of the intestine where water is absorbed from remaining waste food.
Rectum	Part of the digestive system where faeces are stored before leaving the body.

The Digestive System
A complex series of organs and glands that processes food.



Mountains in the UK	
Mountain range	A series of mountains or hills ranged in a line and connected by high ground.
Crag	A mass of rock that projects outward from a rock face or cliff.
Peak	The highest point of a mountain.
Tectonic plates	The outer layer of the Earth made of solid rock that move around.

What is a mountain?
A large natural elevation of the earth's surface rising abruptly from the ground.
Mountain ranges in the UK and the world.
The Pennines, the Rockies, the Andes, the Himalayas.



Mountains in the UK and the world.	
<p>Snowdon - Wales</p>	<p>Ben Nevis - Scotland</p>
<p>Mount Everest</p>	<p>Mount Kilimanjaro</p>