

Knowledge Organiser - Acorn - Autumn 2



**Barton Clough
Primary School**
BRIGHT FUTURES EDUCATIONAL TRUST

Science - Seasonal Changes

Vocabulary

seasons	Four divisions of the year (spring, summer, autumn, and winter)
months	The year is divided into 12 months
deciduous	A tree that sheds its leaves every year.
evergreen	A tree that keeps its leaves all year.
weather	What is happening outside -hot, clouds, wind, rain, sunny.
temperature	How hot or cold it feels

Geography

Where we live - The UK Where do we live and what is it like?

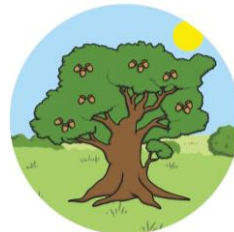
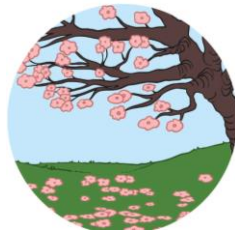
- Name the four countries of the UK.
- To identify the capital cities of the UK.
- The seas surrounding the UK.
- To identify Manchester on a map.
- Identify physical and human features.

Vocabulary

United Kingdom, England, Scotland, Wales, Northern Ireland, Manchester, Stretford, North Sea, The English Channel, Irish Sea, North Atlantic Ocean.

Spring

Summer



Autumn

Winter

